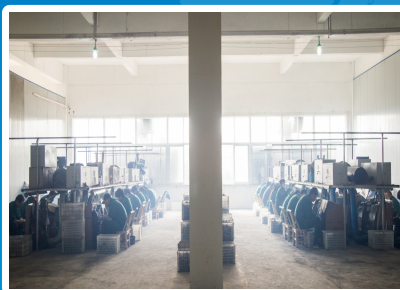




压铸车间



金工车间



抛光车间



组装车间

公司地址：湖北省通山县经济开发区
Address: HuBei Province, TongShan City, Economic Development Zone KeAo Industrial Park
手机：15168689604 19907248553
电话：0715—2880533 传真：0715—2391777 qq：953072294
公司账号：42050169650800000318
开户行：中国建设银行股份有限公司通山支行
Opening bank：China Construction Bank limited company TongShan sub-branch
网站：<http://www.hbnygm.com>
E-mail: Sales01@hbnygm.com Sales02@hbnygm.com

产品录

PRODUCT MANUAL

湖北牛爷工贸有限公司
HuBei Niu Ye Industry and Trade Co., LTD



企业简介

COMPANY PROFILE

湖北牛爷工贸有限公司是浙江台州牛牌工贸有限公司的全资公司，公司始建于2010年，专业从事开发、生产家具五金配件类产品，致力于为全球客户提供物超所值的家具五金配件产品和服务。

公司技术力量雄厚，拥有从产品设计、模具开发、压铸、精工、抛光、电镀、环保纳米喷涂等全产业链的整套设备及生产能力，主要产品涵盖各种管连接件、衣帽钩、毛巾架、门把手、沙发脚、晾衣架、服装展示道具、货架配件等。现有员工超过180人，产品远销东南亚、美国、澳大利亚、欧盟、独联体、中东等国家和地区。

牛爷五金以“提供物超所值的宜县五金配件产品和服务，让用户更有竞争力”为使命，积极响应客户需求，同时，注重产品质量管理，技术工艺创新，全面的产品检测与专业的作业生产保证牛爷五金产品的高质量水准。

未来十年，牛爷五金将继续秉承“服务客户、创造价值”的经营理念，做大做强家具五金配件的主要业务，做成产品结构合理、技术领先、管理高效等竞争优势明显的国内外知名企业。

2018年，公司落户通山县境内，现坐落于湖北省通山县经济技术开发区科奥工业园，拥有5000平方米左右的生产基地。公司位于鄂东南地区，西北距咸宁市区30公里，距离咸宁火车站32公里，北距武汉市100公里，距离武汉天河机场120公里，境内三条高速公路贯穿全境，交通十分便利，热忱欢迎社会各界同仁、客户前来参观指导。

HuBei NiuYe Industry and Trade Co. LTD company profile

Hubei NiuYe Industry and Trade Co.LTD is a wholly-owned company of

Zhejiang TaiZhou Niu brand industry and trade co., LTD. The company was founded in 2010, Specializing in the development, production of furniture hardware accessories products, dedicated to providing global customers with excellent quality and reasonable price's yixian hardware accessories products and services.

Company technical force is abundant, from product design, mold development, die-casting, precision work, polishing, electroplating, environmental protection spray coating etc, and the whole industry chain of a complete set of equipment and production capacity, the main products include all kinds of pipe fittings, clothes hook, towel rack, door handles, sofa feet, clothes hanger, clothing display props, shelf fittings and so on. Now more than 180 employees, the products are exported to southeast Asia, USA, Australia, EU, the Commonwealth of the Independent States, Middle East and other countries and regions.

NiuYe hardware to "provide the suitable and value hardware accessories products and services, make more competitive force" for the mission for customers, positive response to customer needs, at the same time, pay attention to product quality management, technology innovation, inspection and professional work of comprehensive guarantee NiuYe hardware products of high quality level.

In the next ten years, NIUYE hardware will continue adhering to the "service customers, create value" business philosophy, strengthen the main business of furniture hardware accessories, make reasonable product structure, leading technology, efficient management and competitive advantages well-known enterprises at home and abroad.

In 2018, the company is located in TongShan city. It is located in the KEAO industrial park economic and technological development zone in TongShan city, HuBei province, with a production base of about 5,000 square meters. Company is located in southeast hubei, northwest about 30 kilometers from xianning city, 32 kilometers distance xianning railway station, the north is 100 km from wuhan city, 120 km from wuhan tianhe airport, in three highway running through, the traffic is very convenient, welcome all walks of life, customers come to visit the guidance.



| | |
|-----------|--------------|
| Index: | A-101 |
| Dia: | 25MM,32MM |
| Finish: | CP/VACUUM |
| Material: | ALUMINUM |
| Packing: | 120PCS/CTN |



| | |
|-----------|--------------|
| Index: | A-102 |
| Dia: | 25MM,32MM |
| Finish: | CP/VACUUM |
| Material: | ALUMINUM |
| Packing: | 200PCS/CTN |



| | |
|-----------|---------------|
| Index: | A-102A |
| Dia: | 25+15X30MM |
| Finish: | CP/VACUUM |
| Material: | ALUMINUM |
| Packing: | 200PCS/CTN |



| | |
|-----------|---------------|
| Index: | A-102C |
| Dia: | 25MM |
| Finish: | CP/VACUUM |
| Material: | ALUMINUM |
| Packing: | 200PCS/CTN |



| | |
|-----------|--------------|
| Index: | A-103 |
| Dia: | 25MM,32MM |
| Finish: | CP/VACUUM |
| Material: | ALUMINUM |
| Packing: | 120PCS/CTN |



| | |
|-----------|--------------|
| Index: | A-104 |
| Dia: | 25MM,32MM |
| Finish: | CP/VACUUM |
| Material: | ALUMINUM |
| Packing: | 200PCS/CTN |



| | |
|-----------|----------------|
| Index: | A-104-2 |
| Dia: | 25MM,32MM |
| Finish: | CP/VACUUM |
| Material: | ALUMINUM |
| Packing: | 100PCS/CTN |



| | |
|-----------|--------------|
| Index: | A-105 |
| Dia: | 25MM |
| Finish: | CP/VACUUM |
| Material: | ALUMINUM |
| Packing: | 200PCS/CTN |



| | |
|-----------|----------------|
| Index: | A-105-2 |
| Dia: | 25MM |
| Finish: | CP/VACUUM |
| Material: | ALUMINUM |
| Packing: | 100PCS/CTN |



| | |
|-----------|--------------|
| Index: | A-106 |
| Dia: | 25MM |
| Finish: | CP/VACUUM |
| Material: | ALUMINUM |
| Packing: | 120PCS/CTN |



| | |
|-----------|--------------|
| Index: | A-107 |
| Dia: | 25MM |
| Finish: | CP/VACUUM |
| Material: | ALUMINUM |
| Packing: | 80PCS/CTN |



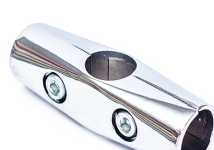
| | |
|-----------|--------------|
| Index: | A-108 |
| Dia: | 25MM |
| Finish: | CP/VACUUM |
| Material: | ALUMINUM |
| Packing: | 80PCS/CTN |



| | |
|-----------|--------------|
| Index: | A-109 |
| Dia: | 25MM,32MM |
| Finish: | CP/VACUUM |
| Material: | ALUMINUM |
| Packing: | 100PCS/CTN |



| | |
|-----------|----------------|
| Index: | A-109-2 |
| Dia: | 25MM,32MM |
| Finish: | CP/VACUUM |
| Material: | ALUMINUM |
| Packing: | 50PCS/CTN |



| | |
|-----------|--------------|
| Index: | A-110 |
| Dia: | 25MM,32MM |
| Finish: | CP/VACUUM |
| Material: | ALUMINUM |
| Packing: | 100PCS/CTN |



| | |
|-----------|--------------|
| Index: | A-117 |
| Dia: | 25MM,32MM |
| Finish: | CP/VACUUM |
| Material: | ALUMINUM |
| Packing: | 200PCS/CTN |



| | |
|-----------|----------------|
| Index: | A-117-4 |
| Dia: | 25MM, 32MM |
| Finish: | CP/VACUUM |
| Material: | ALUMINUM |
| Packing: | 50PCS/CTN |



| | |
|-----------|--------------|
| Index: | A-118 |
| Dia: | 25MM,32MM |
| Finish: | CP/VACUUM |
| Material: | ALUMINUM |
| Packing: | 120PCS/CTN |



| | |
|-----------|--------------|
| Index: | A-111 |
| Dia: | 25MM |
| Finish: | CP/VACUUM |
| Material: | ALUMINUM |
| Packing: | 120PCS/CTN |



| | |
|-----------|--------------|
| Index: | A-112 |
| Dia: | 25MM |
| Finish: | CP/VACUUM |
| Material: | ALUMINUM |
| Packing: | 120PCS/CTN |



| | |
|-----------|---------------|
| Index: | A-112A |
| Dia: | 25MM |
| Finish: | CP/VACUUM |
| Material: | ALUMINUM |
| Packing: | 200PCS/CTN |



| | |
|-----------|----------------|
| Index: | A-118-B |
| Dia: | 25MM,32MM |
| Finish: | CP/VACUUM |
| Material: | ALUMINUM |
| Packing: | 100PCS/CTN |



| | |
|-----------|--------------|
| Index: | A-119 |
| Dia: | 25MM,32MM |
| Finish: | CP/VACUUM |
| Material: | ALUMINUM |
| Packing: | 80PCS/CTN |



| | |
|-----------|--------------|
| Index: | A-120 |
| Dia: | 25MM,32MM |
| Finish: | CP/VACUUM |
| Material: | ALUMINUM |
| Packing: | 200PCS/CTN |



| | |
|-----------|---------------|
| Index: | A-112B |
| Dia: | 25MM,32MM |
| Finish: | CP/VACUUM |
| Material: | ALUMINUM |
| Packing: | 100PCS/CTN |



| | |
|-----------|--------------|
| Index: | A-113 |
| Dia: | 25MM,32MM |
| Finish: | CP/VACUUM |
| Material: | ALUMINUM |
| Packing: | 200PCS/CTN |



| | |
|-----------|--------------|
| Index: | A-114 |
| Dia: | 25MM,32MM |
| Finish: | CP/VACUUM |
| Material: | ALUMINUM |
| Packing: | 200PCS/CTN |



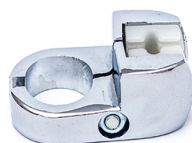
| | |
|-----------|----------------|
| Index: | A-120-4 |
| Dia: | 25MM,32MM |
| Finish: | CP/VACUUM |
| Material: | ALUMINUM |
| Packing: | 40PCS/CTN |



| | |
|-----------|--------------|
| Index: | A-121 |
| Dia: | 25MM,32MM |
| Finish: | CP/VACUUM |
| Material: | ALUMINUM |
| Packing: | 120PCS/CTN |



| | |
|-----------|--------------|
| Index: | A-122 |
| Dia: | 16MM |
| Finish: | CP/VACUUM |
| Material: | ALUMINUM |
| Packing: | 500PCS/CTN |



| | |
|-----------|--------------|
| Index: | A-115 |
| Dia: | 25MM |
| Finish: | CP/VACUUM |
| Material: | ALUMINUM |
| Packing: | 200PCS/CTN |



| | |
|-----------|----------------|
| Index: | A-115-2 |
| Dia: | 25MM |
| Finish: | CP/VACUUM |
| Material: | ALUMINUM |
| Packing: | 100PCS/CTN |



| | |
|-----------|--------------|
| Index: | A-116 |
| Dia: | 25MM,32MM |
| Finish: | CP/VACUUM |
| Material: | ALUMINUM |
| Packing: | 400PCS/CTN |



| | |
|-----------|--------------|
| Index: | A-123 |
| Dia: | 25MM |
| Finish: | CP/VACUUM |
| Material: | ALUMINUM |
| Packing: | 1000PCS/CTN |



| | |
|-----------|--------------|
| Index: | A-124 |
| Dia: | 25MM, 32MM |
| Finish: | CP/VACUUM |
| Material: | ALUMINUM |
| Packing: | 400PCS/CTN |



| | |
|-----------|----------------|
| Index: | A-124-B |
| Dia: | 25MM |
| Finish: | CP/VACUUM |
| Material: | ALUMINUM |
| Packing: | 400PCS/CTN |



| | |
|-----------|--------------|
| Index: | A-125 |
| Dia: | 25MM |
| Finish: | CP/VACUUM |
| Material: | ALUMINUM |
| Packing: | 100PCS/CTN |



| | |
|-----------|--------------|
| Index: | A-126 |
| Dia: | 25MM |
| Finish: | CP/VACUUM |
| Material: | ALUMINUM |
| Packing: | 100PCS/CTN |



| | |
|-----------|--------------|
| Index: | A-127 |
| Dia: | 25MM,32MM |
| Finish: | CP/VACUUM |
| Material: | ALUMINUM |
| Packing: | 100PCS/CTN |



| | |
|-----------|----------------|
| Index: | A-132-2 |
| Dia: | 25MM,32MM |
| Finish: | CP/VACUUM |
| Material: | ALUMINUM |
| Packing: | 100PCS/CTN |



| | |
|-----------|----------------|
| Index: | A-133-1 |
| Dia: | 25MM,32MM |
| Finish: | CP/VACUUM |
| Material: | ALUMINUM |
| Packing: | 100PCS/CTN |



| | |
|-----------|----------------|
| Index: | A-133-2 |
| Dia: | 25MM |
| Finish: | CP/VACUUM |
| Material: | ALUMINUM |
| Packing: | 160PCS/CTN |



| | |
|-----------|----------------|
| Index: | A-127-1 |
| Dia: | 25MM,32MM |
| Finish: | CP/VACUUM |
| Material: | ALUMINUM |
| Packing: | 100PCS/CTN |



| | |
|-----------|----------------|
| Index: | A-127-2 |
| Dia: | 25MM,32MM |
| Finish: | CP/VACUUM |
| Material: | ALUMINUM |
| Packing: | 100PCS/CTN |



| | |
|-----------|---------------|
| Index: | A-127A |
| Dia: | 25MM,H8MM |
| Finish: | CP/VACUUM |
| Material: | ALUMINUM |
| Packing: | 100PCS/CTN |



| | |
|-----------|--------------|
| Index: | A-134 |
| Dia: | 25MM,32MM |
| Finish: | CP/VACUUM |
| Material: | ALUMINUM |
| Packing: | 60PCS/CTN |



| | |
|-----------|--------------|
| Index: | A-135 |
| Dia: | 25MM,32MM |
| Finish: | CP/VACUUM |
| Material: | ALUMINUM |
| Packing: | 80PCS/CTN |



| | |
|-----------|--------------|
| Index: | A-136 |
| Dia: | 25MM |
| Finish: | CP |
| Material: | ALUMINUM |
| Packing: | 40PCS/CTN |



| | |
|-----------|--------------|
| Index: | A-128 |
| Dia: | 25MM,32MM |
| Finish: | CP/VACUUM |
| Material: | ALUMINUM |
| Packing: | 200PCS/CTN |



| | |
|-----------|----------------|
| Index: | A-128-A |
| Dia: | 25MM,32MM |
| Finish: | ZINC |
| Material: | IRON |
| Packing: | 150PCS/CTN |



| | |
|-----------|--------------|
| Index: | A-129 |
| Dia: | 25MM,32MM |
| Finish: | CP/VACUUM |
| Material: | ALUMINUM |
| Packing: | 200PCS/CTN |



| | |
|-----------|--------------|
| Index: | A-137 |
| Dia: | 40MM |
| Finish: | CP/PLATE |
| Material: | ALUMINUM |
| Packing: | 100PCS/CTN |



| | |
|-----------|--------------|
| Index: | A-138 |
| Dia: | 25X25MM |
| Finish: | CP |
| Material: | ALUMINUM |
| Packing: | 80PCS/CTN |



| | |
|-----------|--------------|
| Index: | A-139 |
| Dia: | 25X25MM |
| Finish: | CP |
| Material: | ALUMINUM |
| Packing: | 60PCS/CTN |



| | |
|-----------|--------------|
| Index: | A-130 |
| Dia: | 25MM,32MM |
| Finish: | CP/VACUUM |
| Material: | ALUMINUM |
| Packing: | 100PCS/CTN |



| | |
|-----------|--------------|
| Index: | A-131 |
| Dia: | 25MM,32MM |
| Finish: | CP/VACUUM |
| Material: | ALUMINUM |
| Packing: | 120PCS/CTN |



| | |
|-----------|----------------|
| Index: | A-132-1 |
| Dia: | 25MM,32MM |
| Finish: | CP/VACUUM |
| Material: | ALUMINUM |
| Packing: | 100PCS/CTN |



| | |
|-----------|--------------|
| Index: | A-140 |
| Dia: | 25X25MM |
| Finish: | CP |
| Material: | ALUMINUM |
| Packing: | 40PCS/CTN |



| | |
|-----------|--------------|
| Index: | A-141 |
| Dia: | 25X25MM |
| Finish: | CP |
| Material: | ALUMINUM |
| Packing: | 40PCS/CTN |



| | |
|-----------|--------------|
| Index: | A-142 |
| Dia: | 25X25MM |
| Finish: | CP |
| Material: | ALUMINUM |
| Packing: | 200PCS/CTN |



| | |
|-----------|--------------|
| Index: | X-201 |
| Dia: | 25MM |
| Finish: | CP |
| Material: | ZAMAK |
| Packing: | 300PCS/CTN |



| | |
|-----------|---------------|
| Index: | X-201A |
| Dia: | 25MM |
| Finish: | CP |
| Material: | ZAMAK |
| Packing: | 300PCS/CTN |



| | |
|-----------|--------------|
| Index: | X-202 |
| Dia: | 25MM,32MM |
| Finish: | CP |
| Material: | ZAMAK |
| Packing: | 300PCS/CTN |



| | |
|-----------|---------------|
| Index: | X-202A |
| Dia: | 15*30MM |
| Finish: | CP |
| Material: | ZAMAK |
| Packing: | 300PCS/CTN |



| | |
|-----------|---------------|
| Index: | X-202B |
| Dia: | 15*30MM |
| Finish: | CP/NICKEL |
| Material: | ZAMAK |
| Packing: | 500PCS/CTN |



| | |
|-----------|--------------|
| Index: | X-203 |
| Dia: | 50MM |
| Finish: | CP |
| Material: | ZAMAK+IRON |
| Packing: | 40PCS/CTN |



| | |
|-----------|--------------|
| Index: | X-204 |
| Dia: | 50MM |
| Finish: | CP |
| Material: | PLASTIC+IRON |
| Packing: | 90PCS/CTN |



| | |
|-----------|--------------|
| Index: | X-205 |
| Dia: | 25MM |
| Finish: | CP |
| Material: | ZAMAK |
| Packing: | 120PCS/CTN |



| | |
|-----------|--------------|
| Index: | X-206 |
| Dia: | 25MM |
| Finish: | CP |
| Material: | ZAMAK |
| Packing: | 120PCS/CTN |



| | |
|-----------|-------------------------|
| Index: | X-207/A-207(ALU) |
| Dia: | 25MM,32MM |
| Finish: | CP |
| Material: | ZAMAK/ALUMINUM |
| Packing: | 200PCS/CTN |



| | |
|-----------|--------------|
| Index: | X-208 |
| Dia: | 50MM |
| Finish: | CP |
| Material: | ZAMAK |
| Packing: | 200PCS/CTN |



| | |
|-----------|-------------------------|
| Index: | X-209/A-209(ALU) |
| Dia: | 50MM |
| Finish: | CP |
| Material: | ZAMAK/ALUMINUM |
| Packing: | 45PCS/CTN |



| | |
|-----------|--------------|
| Index: | X-210 |
| Dia: | 50MM |
| Finish: | CP |
| Material: | ZAMAK |
| Packing: | 150PCS/CTN |



| | |
|-----------|--------------|
| Index: | X-211 |
| Dia: | 50MM |
| Finish: | CP |
| Material: | ZAMAK |
| Packing: | 120PCS/CTN |



| | |
|-----------|--------------|
| Index: | X-212 |
| Dia: | 50MM |
| Finish: | CP |
| Material: | ZAMAK |
| Packing: | 100PCS/CTN |



| | |
|-----------|--------------|
| Index: | X-213 |
| Dia: | 50MM |
| Finish: | CP |
| Material: | ZAMAK+IRON |
| Packing: | 40PCS/CTN |



| | |
|-----------|--------------|
| Index: | X-214 |
| Dia: | 25MM,32MM |
| Finish: | CP |
| Material: | ZAMAK |
| Packing: | 120PCS/CTN |



| | |
|-----------|--------------|
| Index: | X-215 |
| Dia: | 25MM,32MM |
| Finish: | CP |
| Material: | ZAMAK |
| Packing: | 100PCS/CTN |



| | |
|-----------|--------------|
| Index: | X-216 |
| Dia: | 25MM,32MM |
| Finish: | CP |
| Material: | ZAMAK |
| Packing: | 150PCS/CTN |



| | |
|-----------|-------------------------|
| Index: | X-217 |
| Dia: | 10/13/16/19/25/32/38/50 |
| Finish: | CP |
| Material: | ZAMAK |
| Packing: | 100-1000PCS/CTN |



| | |
|-----------|----------------|
| Index: | X-218 |
| Dia: | 16/19/25/32 |
| Finish: | CP |
| Material: | ZAMAK |
| Packing: | 300-600PCS/CTN |

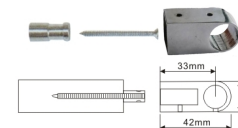


| | |
|-----------|--------------|
| Index: | X-219 |
| Dia: | 5MM |
| Finish: | CP |
| Material: | ZAMAK |
| Packing: | 1500PCS/CTN |



| | |
|-----------|--------------|
| Index: | X-220 |
| Dia: | 5MM |
| Finish: | CP |
| Material: | ZAMAK |
| Packing: | 1500PCS/CTN |

(END)



| | |
|-----------|--------------|
| Index: | X-221 |
| Dia: | 16MM |
| Finish: | CP |
| Material: | ZAMAK |
| Packing: | 300PCS/CTN |